

CERTIFICATE OF LOCATION OF GOVERNMENT CORNER

NORTHEAST Corner of Section 9, Township 108, Range 41, 5TH P.M.

STATE OF MINNESOTA, County of MURRAY

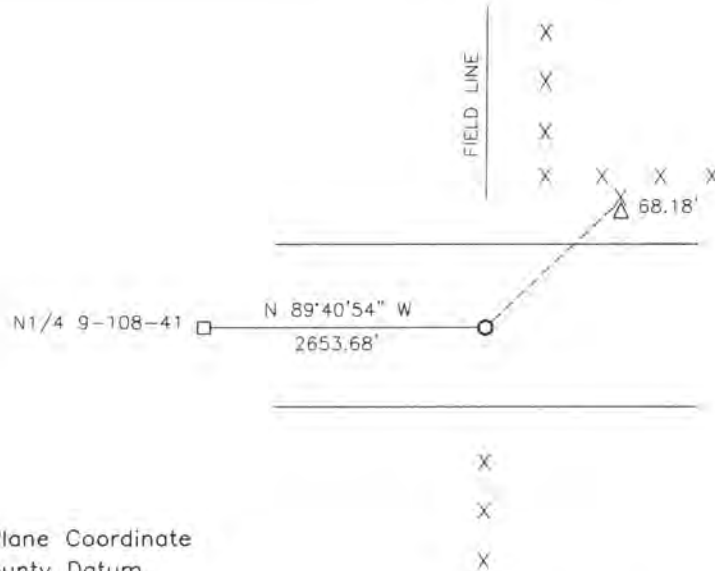
At the corner location shown on the sketch:

On 09-06-2017 found a CAST IRON MONUMENT.
DATE

left monument as found, lowered monument, removed monument (explain)

On 09-06-2017 placed a 5/8" IRON WITH SEAL #43844.
DATE

SKETCH OF REFERENCE TIES

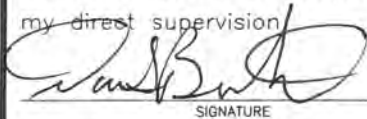


Minnesota State Plane Coordinate
System Murray County Datum
NAD83 (1996)
N: 221576.285
E: 500688.501

Nail and bottle cap in pedestal guard post NE 68.18'

Statement of evidence relative to this corner location is on back of page.

I hereby certify that this document and the data contained herein was prepared by me or under my direct supervision


SIGNATURE

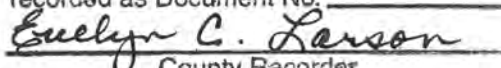
2/20/18
DATE

Registration No. 43844

- Land Surveyor, Professional Engineer
- County Surveyor, County Engineer

STATE OF MINNESOTA, } ss.
COUNTY OF MURRAY, }

I hereby certify that the within Instrument was filed in this office for record on the 26TH day of MARCH A.D. 20 18 at 9:00 o'clock A. M. and was duly recorded as Document No.


County Recorder

Statement of Evidence

In 1861, L.G.M. Fletcher did the original subdivision of the township.

On August 22, 1899, J.W. Woolstencroft, County Surveyor, recorded 2 iron stakes with a 3.5" round stone over them.

On April 25, 1989, Bonnema Land Surveying dug with a backhoe and found 2 irons and 2 stones along with pieces of old wood stake 2' below the road surface. He set a MNDOT cast iron monument at the road surface.

On September 6, 2017, Buettel-Moseng Land Surveying found a MNDOT cast iron monument 3'± below the road surface. We set a 5/8" iron with seal #43844 over the cast iron monument.